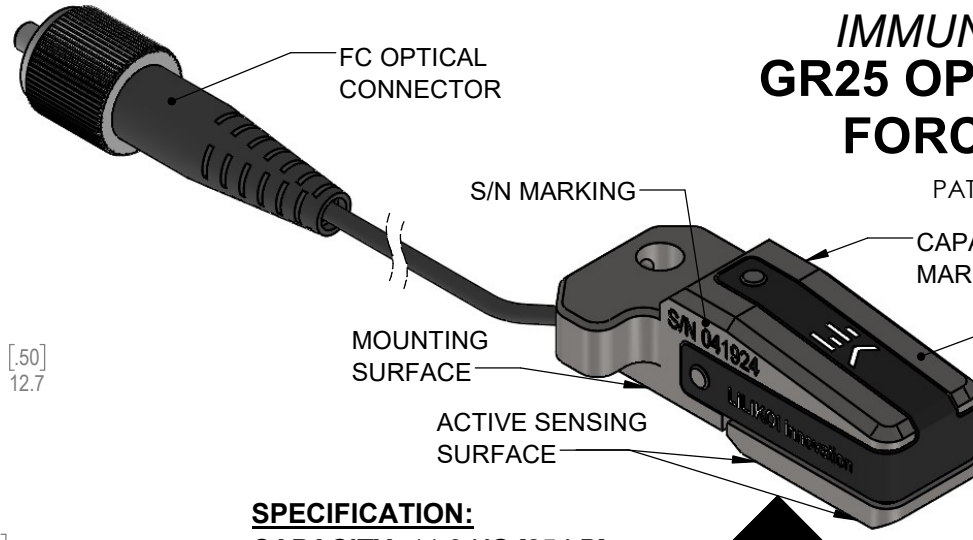
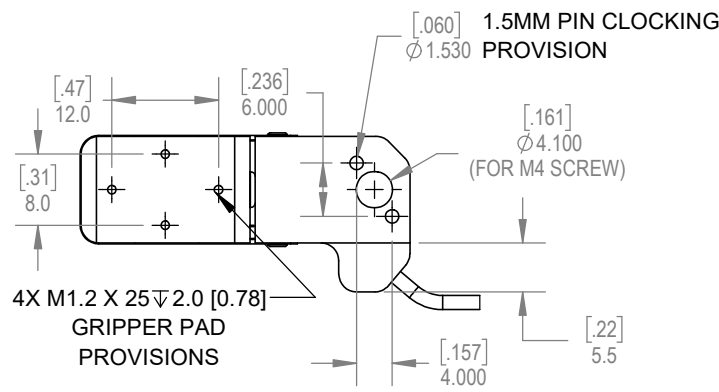
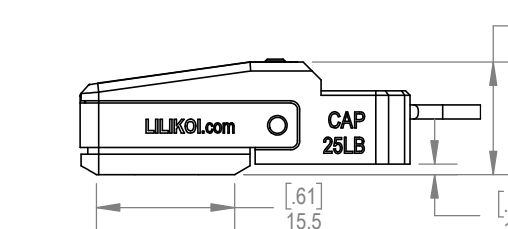
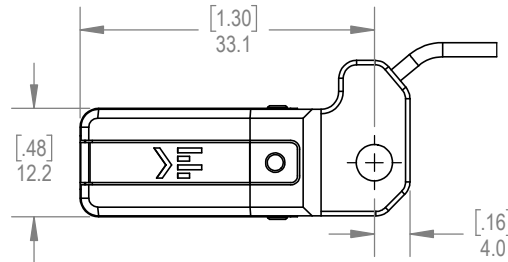


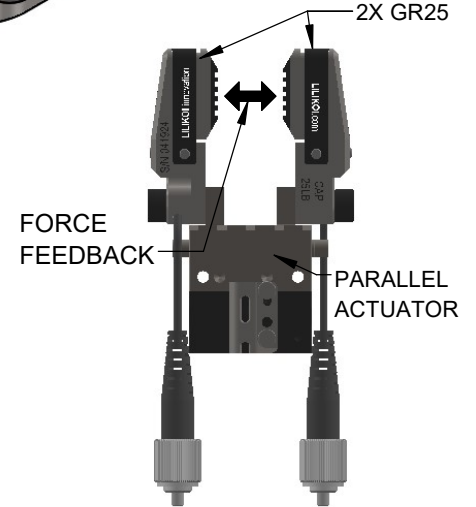
6 5 4 3 2 1

# IMMUNITY SERIES GR25 OPTICAL FINGER FORCE SENSOR

PATENT PENDING




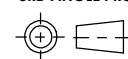
### APPLICATION EXAMPLE



### SPECIFICATION:

- CAPACITY:** 11.3 KG [25 LB]
- OUTPUT ( $\mu\epsilon$ ):** 3500 at FS nom.
- DEFLECTION:** 0.25 [0.009]
- SAFE OVERLOAD:** 200%
- FORCE FBG WL [nm]:** 838 (T) & 878 (C)
- FIBER OP WL [nm]:** 830
- NON-LINEARITY:** 0.5% R.O.
- OPERATING TEMP:** -55°C[-67°F] to 200°C[392°F]
- TEMP SHIFT ZERO:** +/- 0.005% R.O./°C
- TEMP SHIFT SPAN:** +/- 0.002% R.O./°C
- SENSOR BODY:** STAINLESS STEEL
- CABLE LENGTH:** 1m [3.3ft]
- CABLE JACKET:**  $\phi$  1.6mm GLASS TEXTILE
- CONNECTOR:** OPTICAL FC

\*CONTACT FACTORY FOR CUSTOM CAPACITY & SPECIAL CONFIGURATIONS: [INFO@LILIKOI.COM](mailto:INFO@LILIKOI.COM)

<p>ALL DIMENSIONS ARE IN MILLIMETERS, [DUAL DIMENSIONS] ARE IN INCHES/IMPERIAL UNITS. DRAWING INTERPRETATION PER ASME-Y14.5. PATENT PENDING TECHNOLOGY BY LILIKOI innovation LLC. DO NOT REVERSE ENGINEER.</p>	<p>DRAWN BY: BL</p>	<p>TITLE: OPTICAL FINGER FORCE SENSOR</p>		 <p>WWW.LILIKOI.COM</p>
	<p>DATE: 04/27/24</p>	<p>DWG NO.: LP1006</p>	<p>REVISION 0</p>	
<p><b>TOLERANCE BLOCK</b> .X ± .250 .XX ± .125 .XXX ± .050 .XXXX ± .025</p> <p><b>ANGLE CHAMFER</b> ± .5° ± 5° <b>3RD ANGLE PROJ.</b></p> 	<p>APPROVED BY: MJ</p>	<p>ITEM NO.: LLK-0007</p>	<p>MODEL NO.: GR25</p>	<p><b>LILIKOI innovation LLC</b> 2108 N ST STE N, SACRAMENTO, CA 95816, USA</p>
	<p>DATE: 5/2/24</p>	<p>SHEET 1 OF 1</p>		

6 5 4 3 2 1